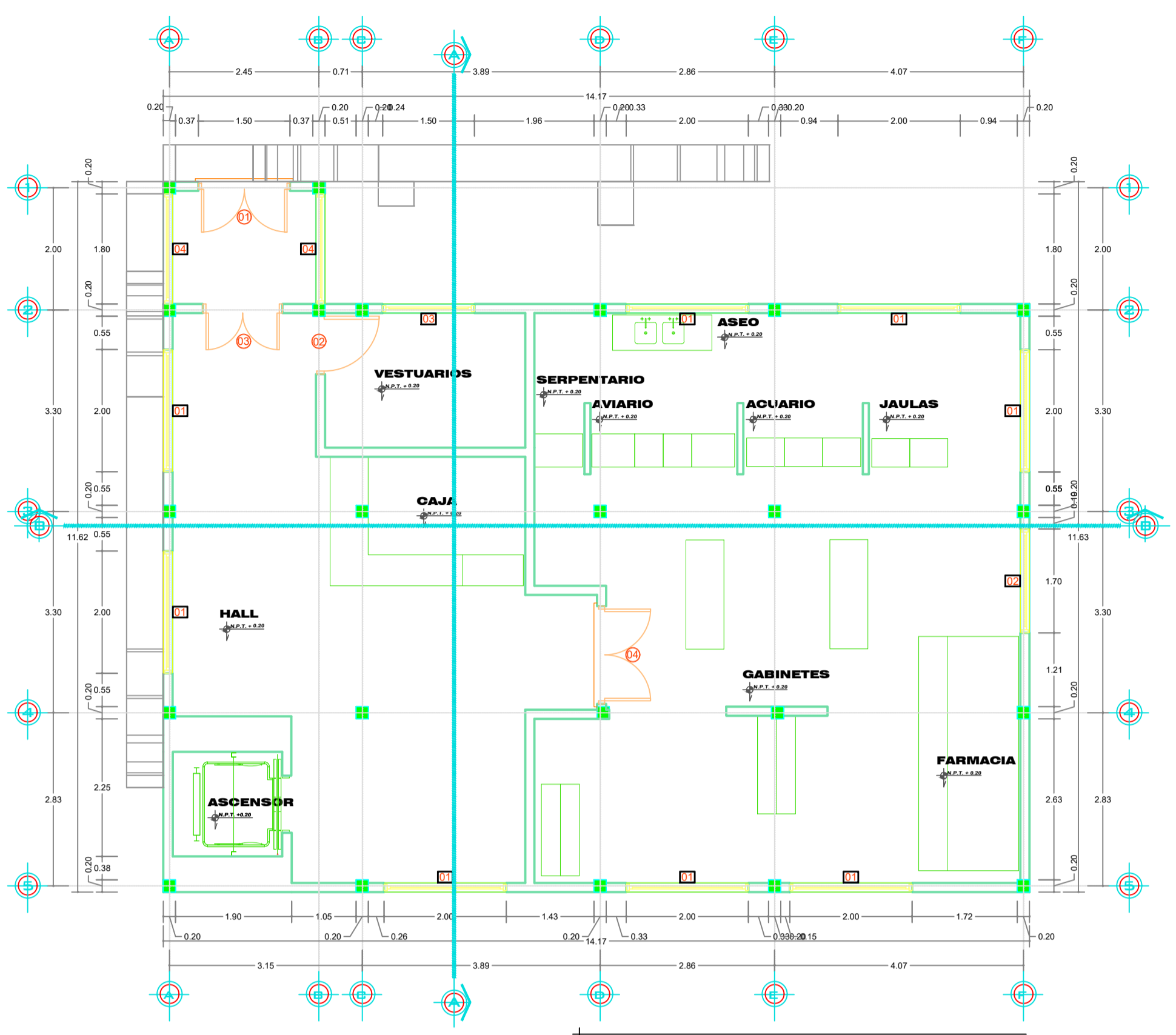
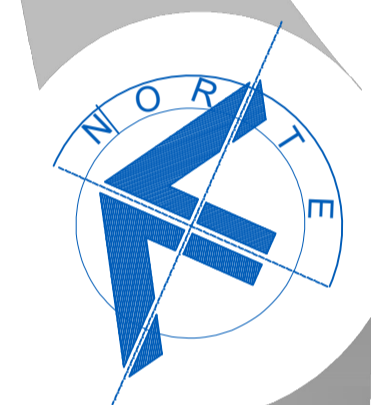


"AZANGAROKIDS CIUDAD INFANTIL DE EDU-ENTRETENIMIENTO EN LA PROVINCIA DE AZANGARO"



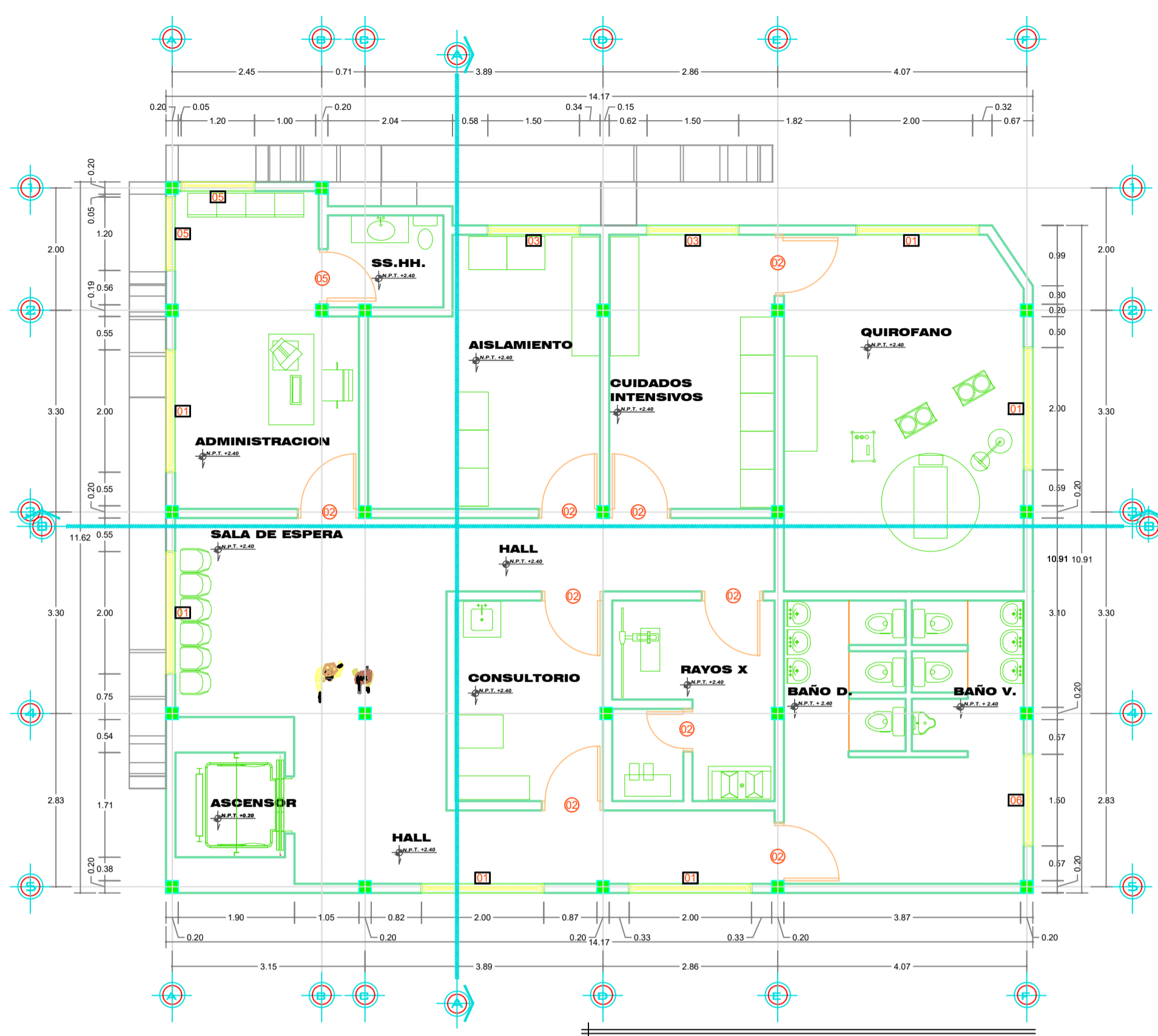
**PLANTA 1er PISO**  
Esc. 1 : 75

**CUADRO DE VANDOS**

| VIVIENDA UNIFAMILIAR |          |       |      |          |
|----------------------|----------|-------|------|----------|
| TIPO                 | CANTIDAD | ANCHO | ALTO | INTERVAL |
| V-1                  | 2.00     | 1.00  | 0.40 | ALUMINIO |
| V-2                  | 1.00     | 1.00  | 0.40 | ALUMINIO |
| V-3                  | 1.00     | 1.00  | 0.40 | ALUMINIO |
| V-4                  | 1.00     | 1.00  | 0.10 | ALUMINIO |
| V-5                  | 1.00     | 1.00  | 0.40 | ALUMINIO |

**CUADRO DE VANDOS**

| VIVIENDA UNIFAMILIAR |          |       |      |                  |
|----------------------|----------|-------|------|------------------|
| TIPO                 | CANTIDAD | ANCHO | ALTO | INTERVAL         |
| P-1                  | 1.40     | 1.00  |      | ALUMINIO         |
| P-2                  | 0.90     | 1.00  |      | MADERA APANELADA |
| P-3                  | 1.20     | 1.00  |      | MADERA APANELADA |
| P-4                  | 1.00     | 1.00  |      | MADERA APANELADA |
| P-5                  | 0.80     | 1.00  |      | MADERA APANELADA |



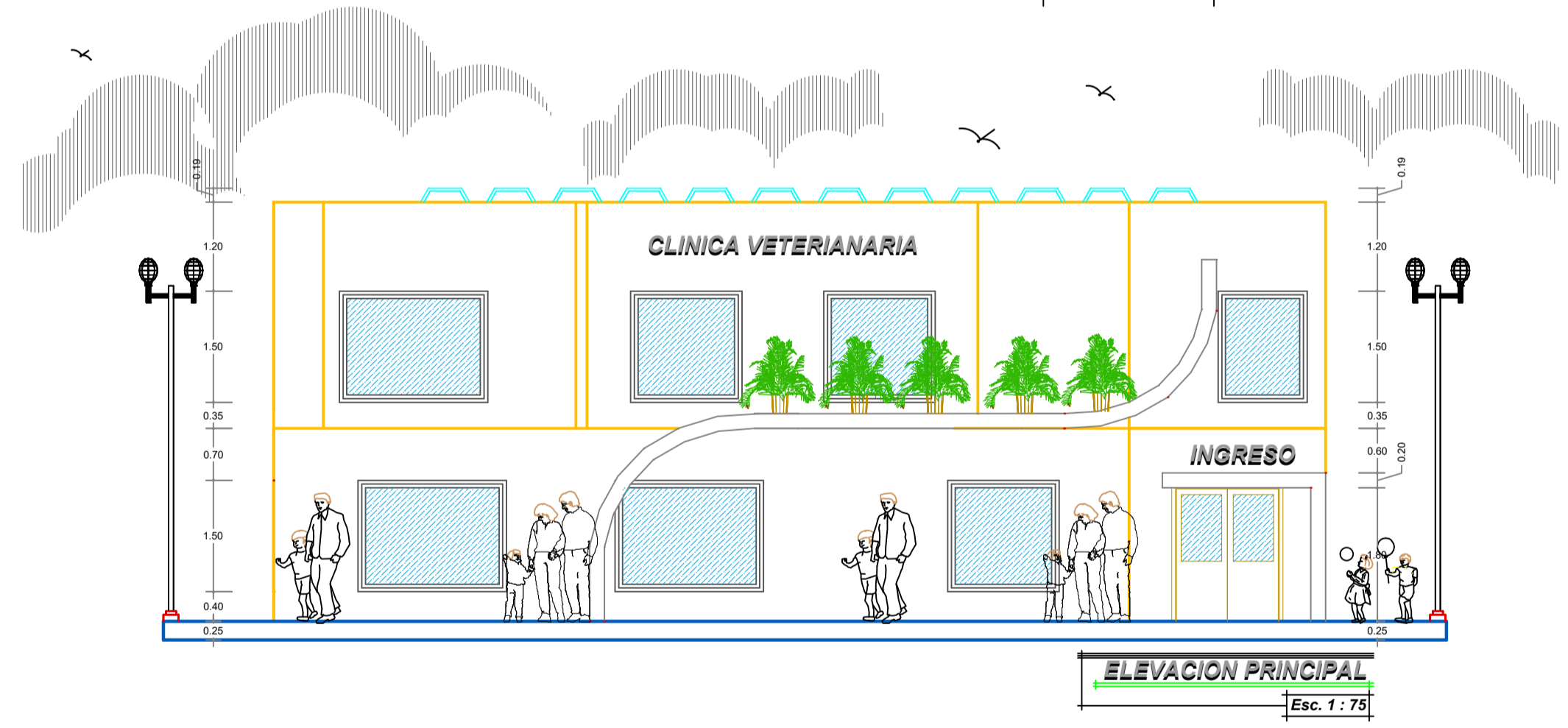
**PLANTA 2do PISO**  
Esc. 1 : 75

**CUADRO DE VANDOS**

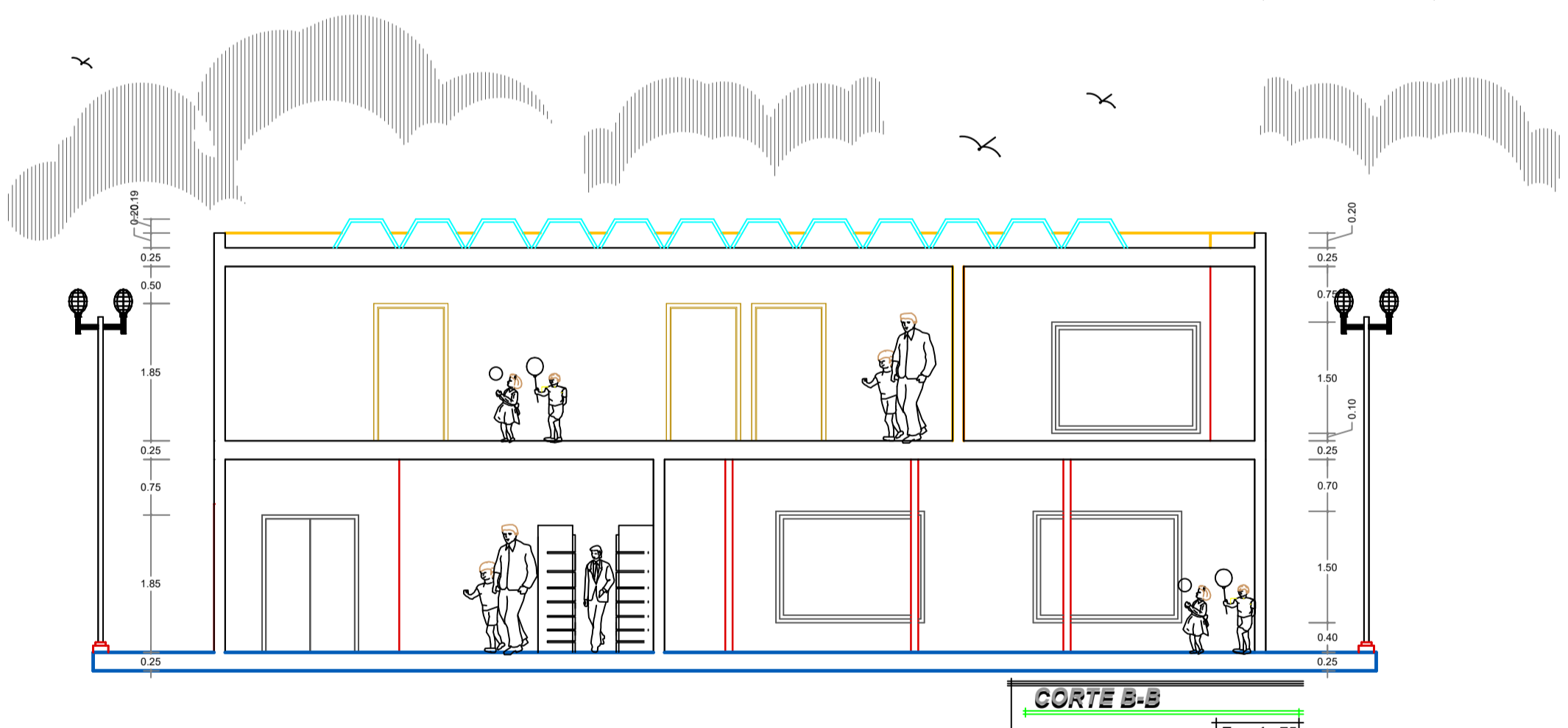
| VIVIENDA UNIFAMILIAR |          |       |      |          |
|----------------------|----------|-------|------|----------|
| TIPO                 | CANTIDAD | ANCHO | ALTO | INTERVAL |
| V-1                  | 2.00     | 1.00  | 0.40 | ALUMINIO |
| V-2                  | 1.00     | 1.00  | 0.40 | ALUMINIO |
| V-3                  | 1.00     | 1.00  | 0.40 | ALUMINIO |
| V-4                  | 1.00     | 1.00  | 0.10 | ALUMINIO |
| V-5                  | 1.00     | 1.00  | 0.40 | ALUMINIO |

**CUADRO DE VANDOS**

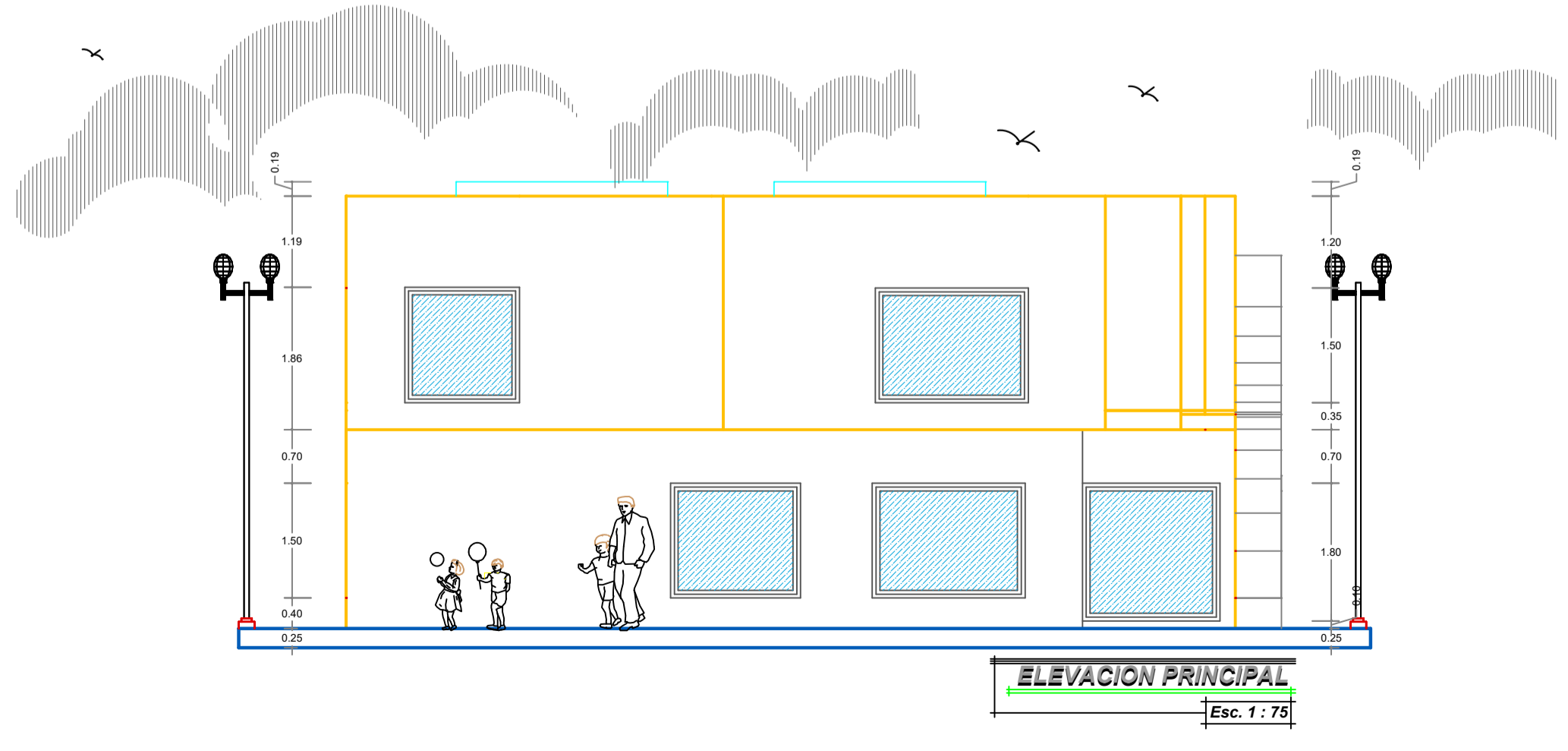
| VIVIENDA UNIFAMILIAR |          |       |      |                  |
|----------------------|----------|-------|------|------------------|
| TIPO                 | CANTIDAD | ANCHO | ALTO | INTERVAL         |
| P-1                  | 1.40     | 1.00  |      | ALUMINIO         |
| P-2                  | 0.90     | 1.00  |      | MADERA APANELADA |
| P-3                  | 1.20     | 1.00  |      | MADERA APANELADA |
| P-4                  | 1.00     | 1.00  |      | MADERA APANELADA |
| P-5                  | 0.80     | 1.00  |      | MADERA APANELADA |



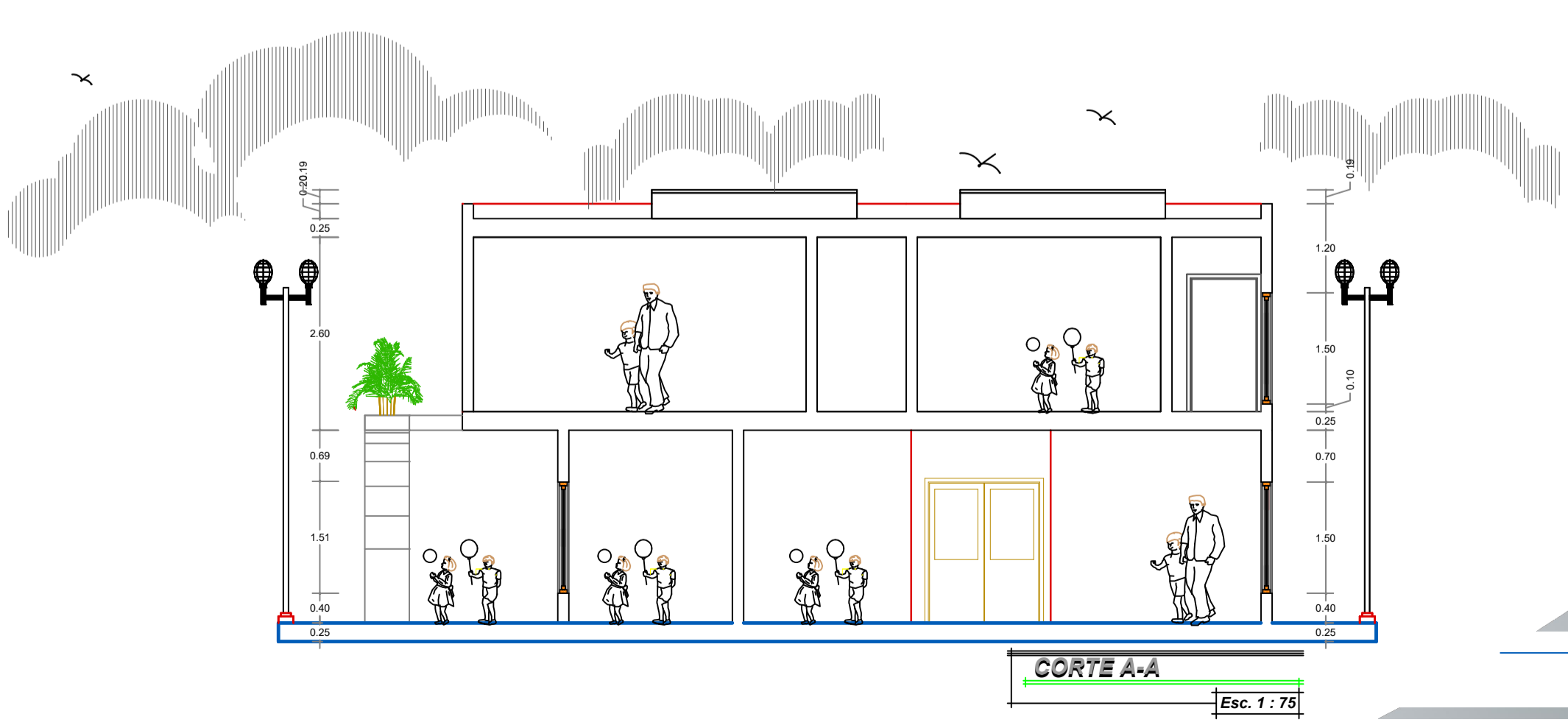
**ELEVACION PRINCIPAL**  
Esc. 1 : 75



**CORTE B-B**  
Esc. 1 : 75



**ELEVACION PRINCIPAL**  
Esc. 1 : 75



**CORTE A-A**  
Esc. 1 : 75

ALUMNO :  
**PAUL HERNAN SILVA FUR**

PLANO : MODULO  
**23.- CLÍNICA VETERINARIA**

FECHA DE ENTREGA:  
**ENERO 2016**

UBICACION:  
**DEPTO. PUNO / PROVI. AZANGARO**

ESCALA :  
**INDICADA**

ACOTACION :  
**METROS**

LAMINA :  
**A-20**  
PLANO:  
**20**  
**27**

