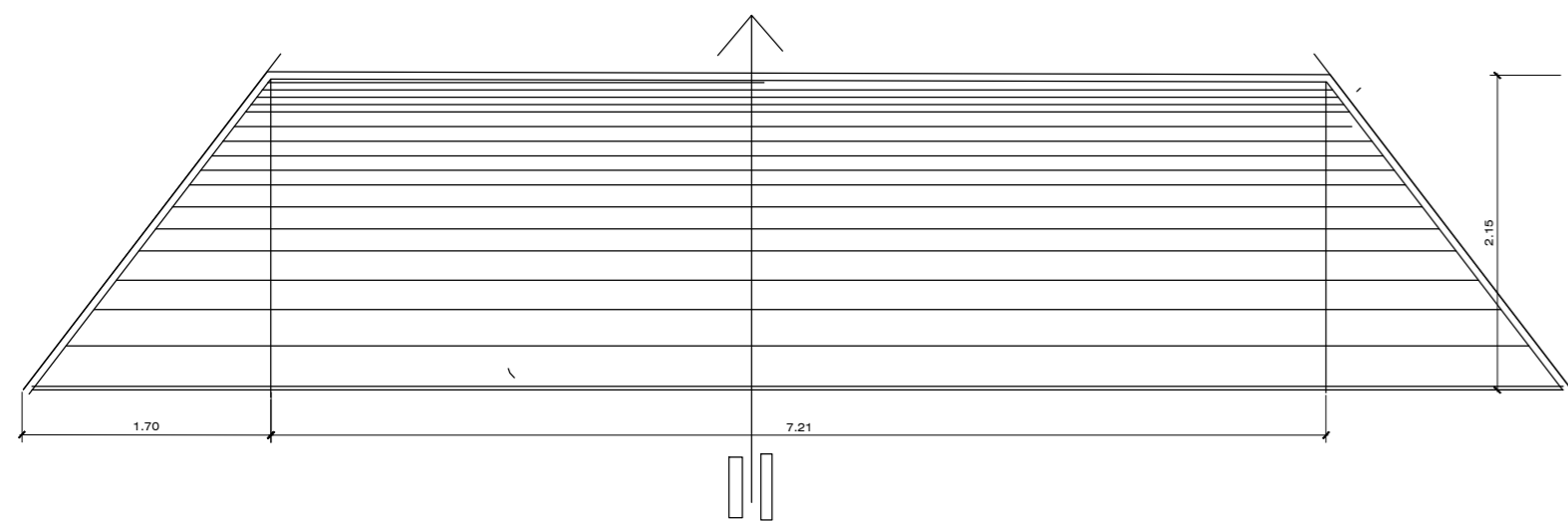
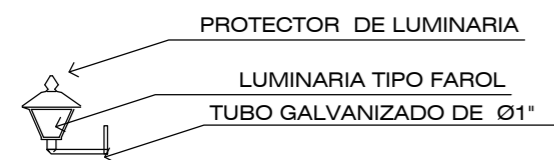


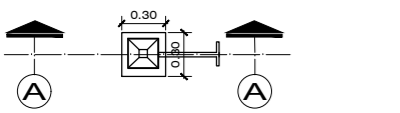
VISTA EN PLANTA DE RAMPA TIPO 1 PEATONAL
ESC: 1/50



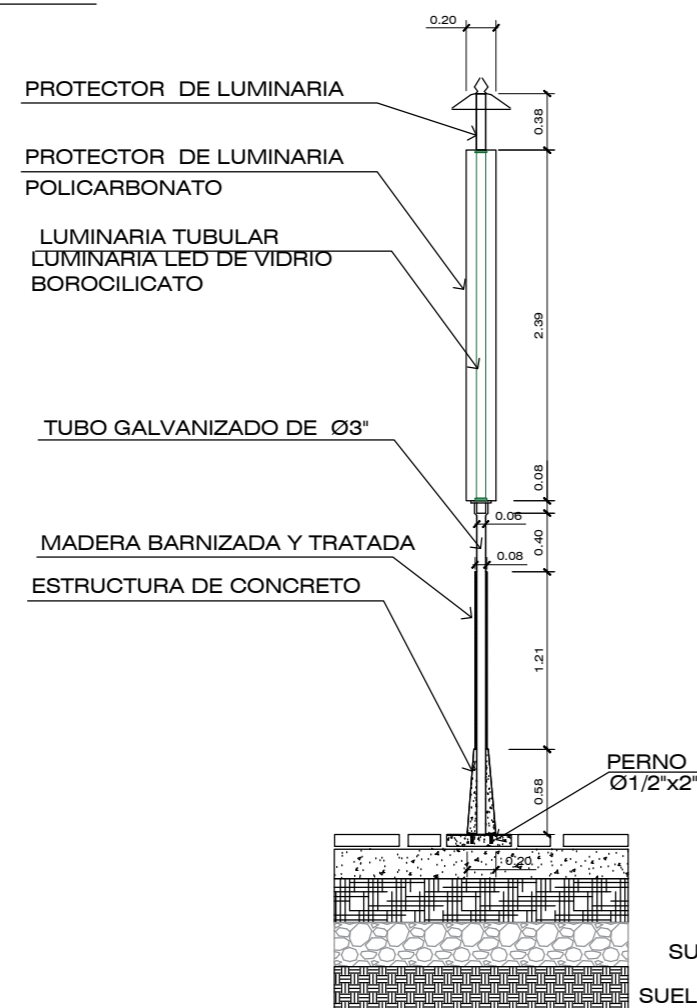
VISTA EN PLANTA DE RAMPA TIPO 2 PEATONAL
ESC: 1/50



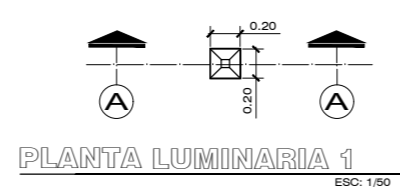
CORTE LUMINARIA 2
ESC: 1/50



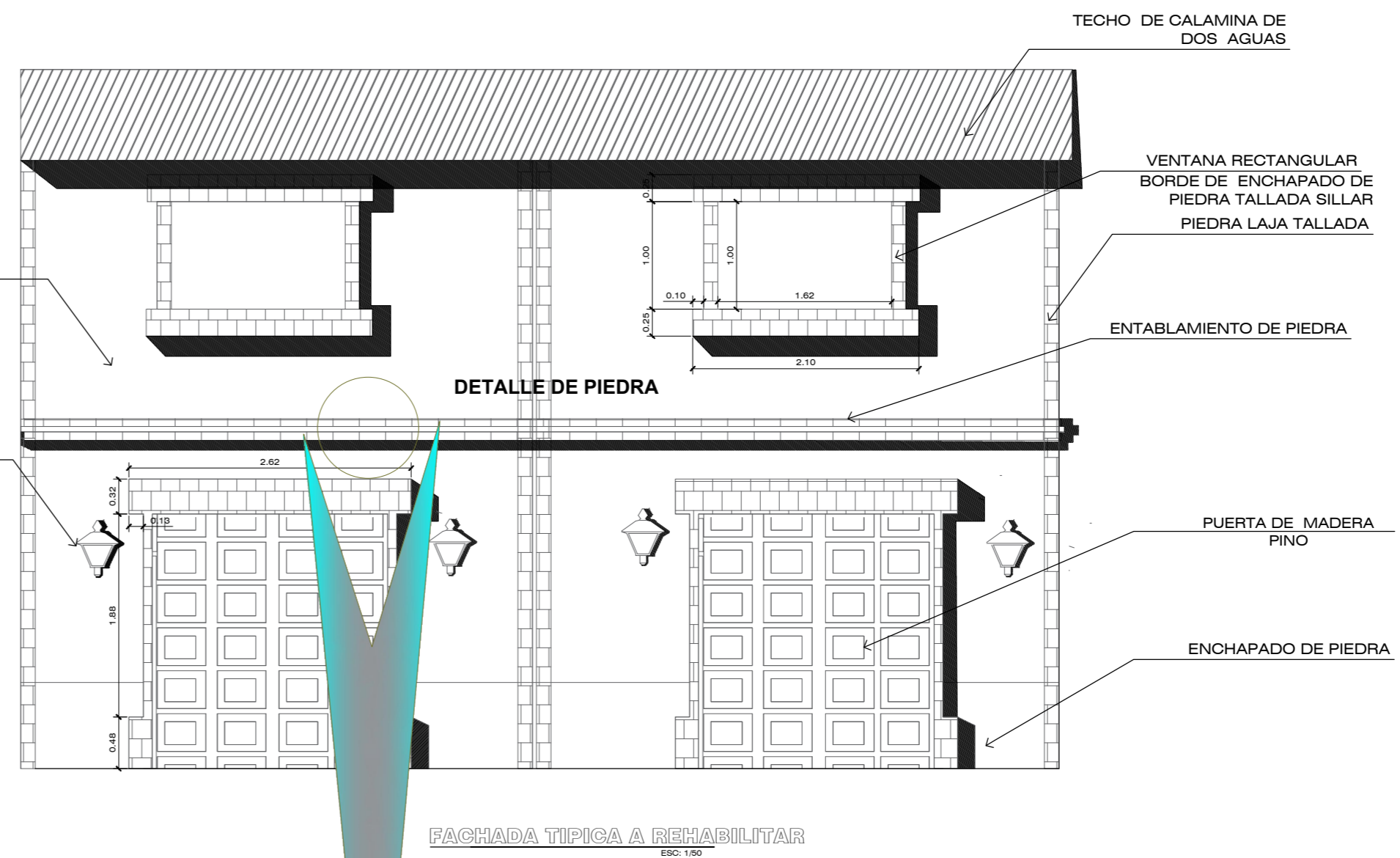
PLANTA LUMINARIA 2
ESC: 1/50



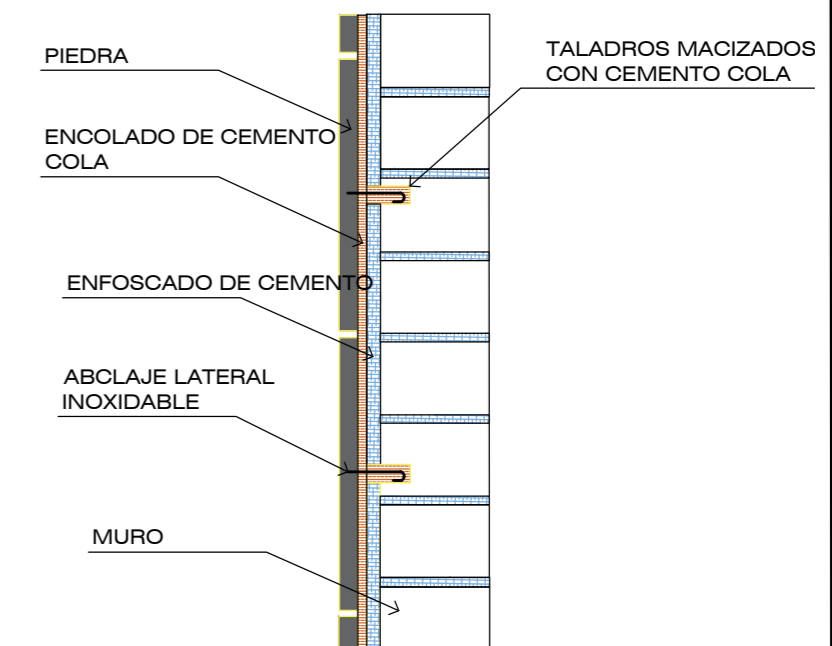
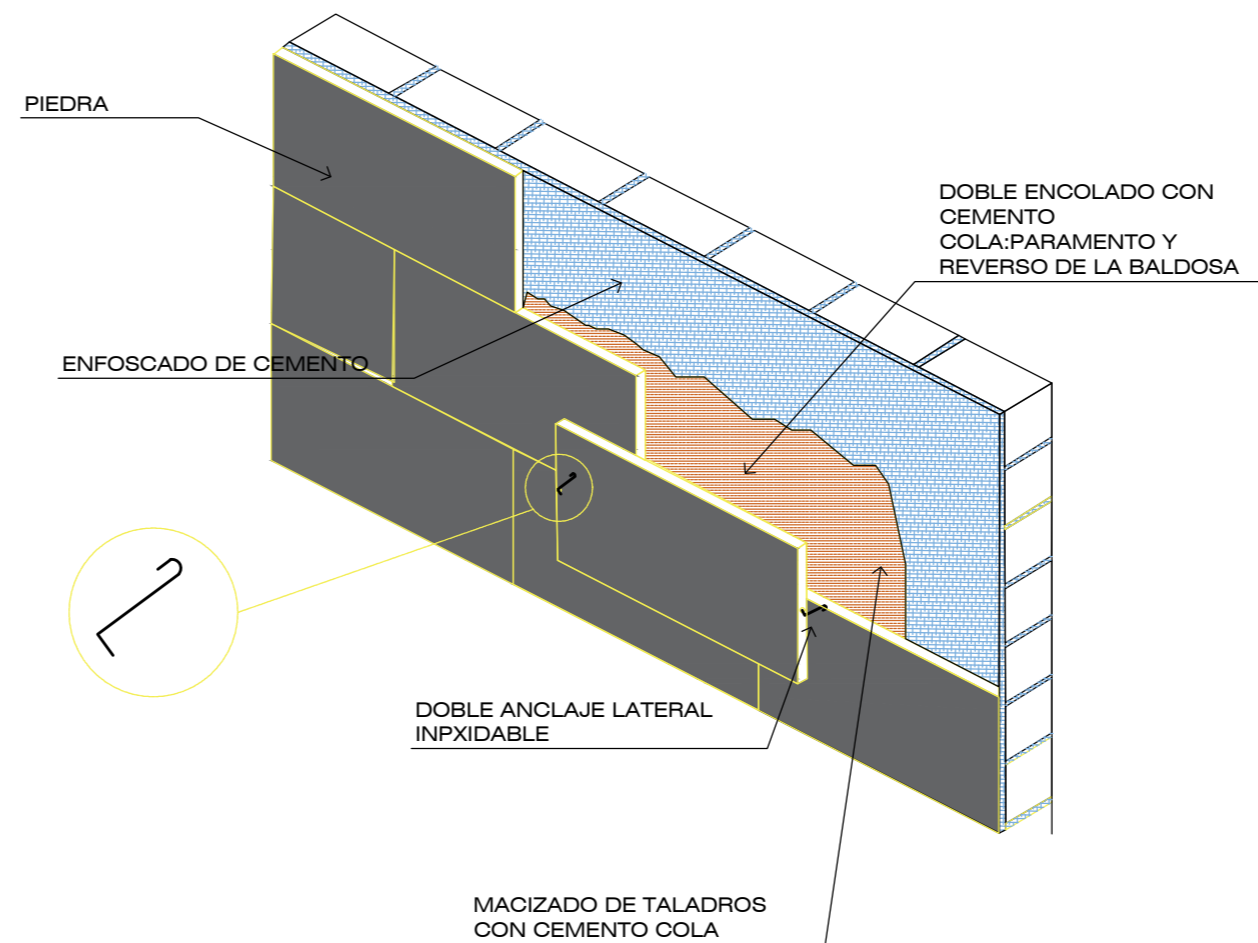
CORTE A-A DE LUMINARIA 1
ESC: 1/50



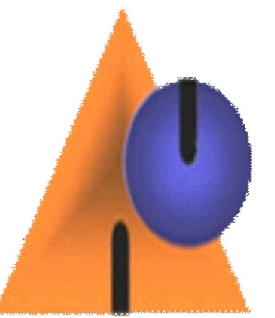
PLANTA LUMINARIA 1
ESC: 1/50



FACHADA TIPICA A REHABILITAR
ESC: 1/50



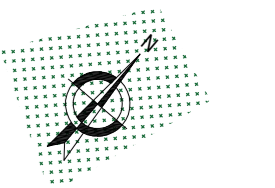
UNIVERSIDAD
NACIONAL
DEL
ALTIPLANO



FACULTAD DE
INGENIERIA CIVIL Y
ARQUITECTURA

ESCUELA
PROFESIONAL DE
ARQUITECTURA Y
URBANISMO

UBICACION:



PROYECTO:

REHABILITACION DEL
ESPACIO PUBLICO URBANO
EN EL ENTORNO DE LA
CATEDRA DE LA CIUDAD DE
AYAVIRI CON IDENTIDAD E
INTEGRACION SOCIO
CULTURAL

PLANO:
PLANO DE DETALLES
ARQUITECTONICOS

TESISTA:

Bach. JULIA CLAUDIA
AUCAPINO CHAÑA

ESCALA:
S/E

LAMINA:

07